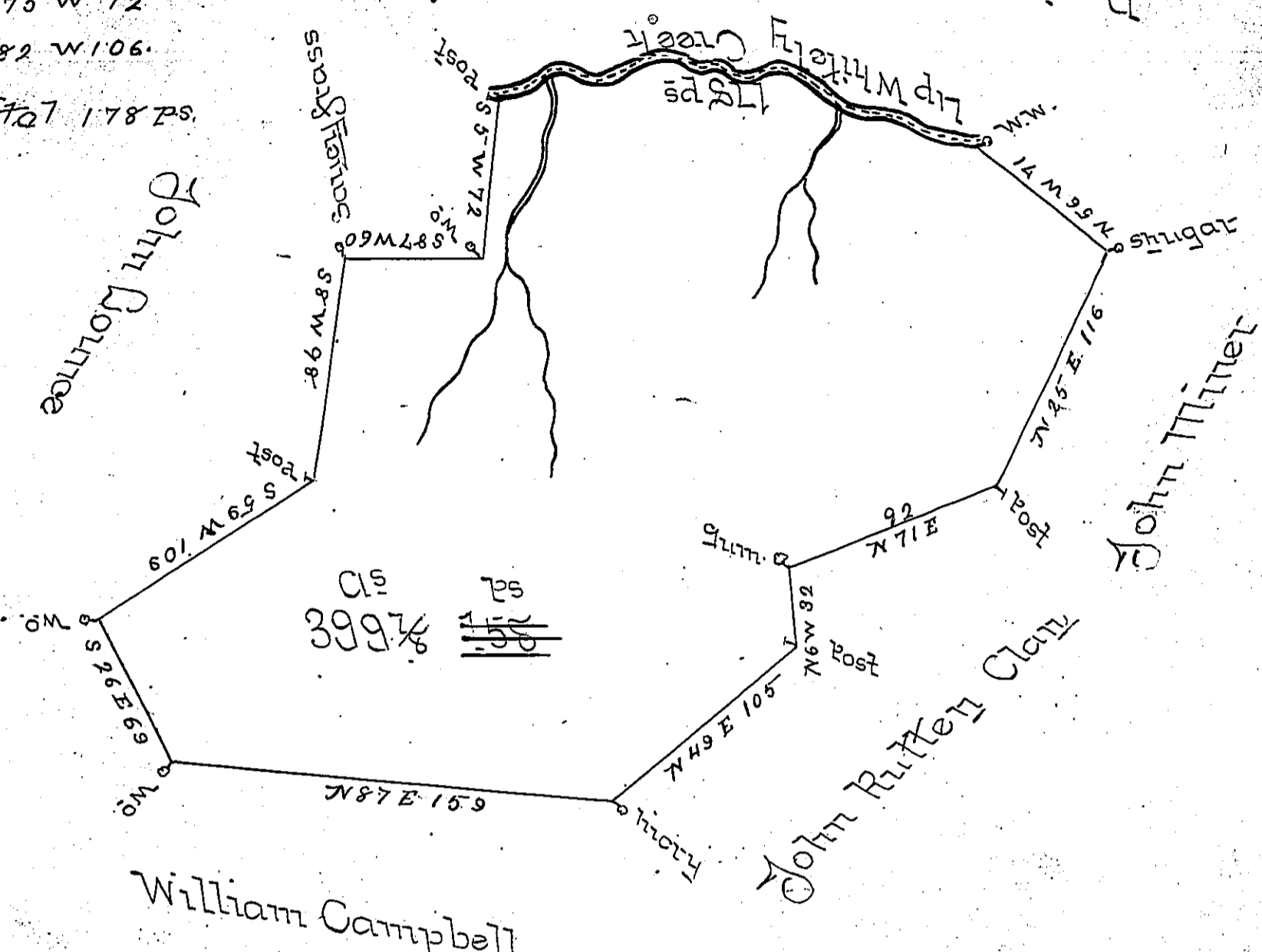


Courses and Distances up the Creek.

N 75 W 72

S 82 W 106.

Total 178 ps.



William Campbell

The above is a Draught of a Survey Made October 25<sup>th</sup> 1785  
 in pursuance of a Warrant granted to Zachariah Gaper  
 Date March 29<sup>th</sup> 1765 Called Dunhard Ridge Containing 399  
 Acres and 150 perches With 6 per Cent Allowa obl.  
 and is sit<sup>obl.</sup> in <sup>Lower P.</sup> Washington County

Jno Hoge D.S.

To John Ruters Esq. S.G.

IN TESTIMONY that the above is a copy of the original remaining on file in  
 the Department of Internal Affairs of Pennsylvania, made  
 conformably to an Act of Assembly approved the 16th day of  
 February, 1833, I have hereunto set my Hand and caused  
 the Seal of said Department to be affixed at Harrisburg,  
 this first day of November 1898.

*James W. Latta*  
 Secretary of Internal Affairs.